

# Understanding clinical outcomes and factors influencing mortality in intensive care unit patients with COVID-19-associated candidemia

Selda Aydın<sup>1</sup>  | Ali Mert<sup>2</sup> | Mesut Yılmaz<sup>1</sup> | Muna Al Maslamani<sup>3</sup> | Bilal Ahmad Rahimi<sup>4</sup> | Fulusakin Ayoade<sup>5</sup> | Amani El-Kholy<sup>6</sup> | Maya Belitova<sup>7</sup> | Buket Erturk Sengel<sup>8</sup>  | Sabah Jalal<sup>9</sup> | Ayşe Albayrak<sup>10</sup> | Jamayel Adnan Alatawi<sup>11</sup> | Balint Gergely Szabo<sup>12,13</sup> | Ramesh Shankar Ganeshan<sup>14</sup> | Emmanuel Nsutebu<sup>14</sup> | Aruna Poojary<sup>15</sup> | Yasemin Akkoyunlu<sup>16</sup> | Sevil Alkan<sup>17</sup> | Dilşah Başkol Elik<sup>18</sup> | Gulden Eser-Karlıdag<sup>19</sup> | Lurdes Santos<sup>20</sup> | Ruxandra Moroti<sup>21</sup> | Nilgün Altın<sup>22</sup> | Esra Gürbüz<sup>23</sup> | Tülay Ünver Ulusoy<sup>22</sup> | Oğuz Reşat Sipahi<sup>18</sup> | Hülya Çaçkurlu<sup>24</sup> | Aliye Esmaoğlu<sup>25</sup> | Botond Lakatos<sup>12</sup> | Nagwa Mostafa El-Sayed<sup>26</sup> | Andrea Marino<sup>27</sup> | Antonio Cascio<sup>28</sup> | Alexandru Mihai<sup>21</sup> | Irina Magdalena Dumitru<sup>29</sup> | Natalia Pshenichnaya<sup>30</sup> | Rezaul Karim Ripon<sup>31</sup> | Mateja Jankovic Makek<sup>32</sup> | Naveed Rashid<sup>33</sup> | Rusmir Baljić<sup>34</sup> | Cosmin Dascalu<sup>35</sup> | Gülden Sincan<sup>36</sup> | Yeşim Uygun Kızmaz<sup>37</sup> | Berk Madendere<sup>38</sup> | Hakan Erdem<sup>39,40</sup>

## Correspondence

Selda Aydın, Infectious Diseases and Clinical Microbiology, Istanbul Medipol University, Istanbul, Turkey.  
 Email: [seldaaydin@medipol.edu.tr](mailto:seldaaydin@medipol.edu.tr)

## Abstract

**Background:** During the COVID pandemic, research has shown an increase in candidemia cases following severe COVID infection and the identification of risk factors associated with candidemia. However, there is a lack of studies that specifically explore clinical outcomes and mortality rates related to candidemia after COVID infection.

**Objectives:** The aim of this international study was to evaluate the clinical outcomes and identify factors influencing mortality in patients who developed candidemia during their COVID infection.

**Patients/Methods:** This study included adult patients (18 years of age or older) admitted to the intensive care unit (ICU) and diagnosed with COVID-associated candidemia (CAC). The research was conducted through ID-IRI network and in collaboration with 34 medical centres across 18 countries retrospectively, spanning from the beginning of the COVID pandemic until December 2021.

**Results:** A total of 293 patients diagnosed with CAC were included. The median age of the patients was 67, and 63% of them were male. The most common *Candida* species detected was *C. albicans*. The crude 30-day mortality rate was recorded at 62.4%. The

For Affiliation refer page on 7

This is an open access article under the terms of the [Creative Commons Attribution](https://creativecommons.org/licenses/by/4.0/) License, which permits use, distribution and reproduction in any medium, provided the original work is properly cited.

© 2024 The Authors. *Mycoses* published by Wiley-VCH GmbH.

logistic regression analysis identified several factors significantly impacting mortality, including age (odds ratio [OR] 1.04, 95% confidence interval [CI] 1.02–1.07,  $p < .0005$ ), SOFA score (OR 1.307, 95% CI 1.17–1.45,  $p < .0005$ ), invasive mechanical ventilation (OR 7.95, 95% CI 1.44–43.83,  $p < .017$ ) and duration of mechanical ventilation (OR 0.98, 95% CI 0.96–0.99,  $p < .020$ ).

**Conclusions:** By recognising these prognostic factors, medical professionals can customise their treatment approaches to offer more targeted care, leading to improved patient outcomes and higher survival rates for individuals with COVID-associated candidemia.

#### KEYWORDS

candidemia, COVID-19, COVID-19-associated candidemia, intensive care unit, mortality

## 1 | INTRODUCTION

Throughout the pandemic, severe cases of COVID have led to extended hospital stays or admission to intensive care units (ICUs). This circumstance has given rise to secondary nosocomial infections caused by bacteria or fungi, a phenomenon observed in other respiratory viral infections as well.<sup>1–3</sup> It is well established that the risk of bacterial or fungal infection is elevated in patients receiving intensive care, particularly those who require mechanical ventilation or other invasive medical devices.<sup>4</sup> Furthermore, there are reports suggesting that the use of immunomodulators (such as tocilizumab) and corticosteroid drugs in the treatment of COVID can potentially heighten the risk of fungal infection.<sup>5,6</sup>

Candidemia, which exhibited a high mortality rate ranging from 30% to 60% in clinical studies conducted before the COVID pandemic,<sup>7–9</sup> as garnered renewed attention in the context of COVID. There have been reports on the increased incidence of candidemia following COVID, as well as the identification of risk factors associated with candidemia and studies on mortality.<sup>10–12</sup>

In this groundbreaking international study, our primary focus was to comprehensively investigate the clinical outcomes that emerge from the intricate connection between COVID-19 and candidemia. By meticulously analysing this relationship, we aimed to gain deep insights into the factors that actively contribute to mortality, thereby enhancing our understanding of this complex phenomenon.

## 2 | MATERIALS AND METHODS

### 2.1 | Study design

Between March 2020 and December 2021, a retrospective cross-sectional multicentre, international study was designed. The study was conducted using the ID-IRI international clinical research platform (<https://infectdisiri.com/>). ID-IRI is a global organisation with members worldwide who voluntarily participate in ID-IRI research

projects. A total of 34 centres from 18 countries took part in this study, including Afghanistan, Bahrain, Bangladesh, Bulgaria, Croatia, Egypt, Hungary, India, Italy, Pakistan, Portugal, Qatar, Romania, Russia, Sarajevo, Turkey, UAE and the USA.

### 2.2 | Case definition

The study included adult patients ( $\geq 18$  years old) who had been diagnosed with COVID, confirmed by a positive reverse transcription-polymerase chain reaction (RT-PCR) test for acute respiratory syndrome coronavirus 2 (SARS-CoV-2), and were admitted to the ICU and subsequently developed candidemia. The severity of COVID was categorised as mild to severe based on the WHO classification.<sup>13</sup>

### 2.3 | Data collection

Data of patients with COVID who were monitored in the ICU until discharge or death were collected for this study using Microsoft Forms through a web page link, from December 2021 to April 2022. The collected data encompassed various demographic characteristics and underlying comorbidities of the patients, such as age, gender, obesity (BMI  $> 35$ ), diabetes mellitus, cardiovascular disease, chronic kidney disease, chronic obstructive pulmonary disease, chronic liver disease, malignancy, solid organ transplantation, hypertension. Additional recorded information included the use of steroid or other immunosuppressive agents in the 3 months prior to the diagnosis of CAC, the utilisation of broad-spectrum antibiotics, the presence of a central venous catheter, total parenteral nutrition, invasive mechanical ventilation, the Sequential Organ Failure Assessment (SOFA) score, absolute lymphocyte count, antiviral treatment for COVID, cytokine releasing syndrome treatment (IL-1 or IL-6 receptor inhibitors), dose and duration of corticosteroid treatment for COVID (with standard guideline recommendation being dexamethasone; 6 mg/day for 10 days, or other options

of corticosteroids), identification of *Candida* species, antifungal susceptibility, antifungal treatment and mortality. Data of patients with COVID who were monitored in the ICU until discharge or death were collected for this study using Microsoft Forms through a web page link, from December 2021 to April 2022. The collected data encompassed various demographic characteristics and underlying comorbidities of the patients, such as age, gender, obesity (BMI > 35), diabetes mellitus, cardiovascular disease, chronic kidney disease, chronic obstructive pulmonary disease, chronic liver disease, malignancy, solid organ transplantation, hypertension. Additional recorded information included the use of steroid or other immunosuppressive agents in the 3 months prior to the diagnosis of CAC, the utilisation of broad-spectrum antibiotics, the presence of a central venous catheter, total parenteral nutrition, invasive mechanical ventilation (IMV), the Sequential Organ Failure Assessment (SOFA) score, absolute lymphocyte count, antiviral treatment for COVID, cytokine releasing syndrome treatment (IL-1 or IL-6 receptor inhibitors), dose and duration of corticosteroid treatment for COVID (with standard guideline recommendation being dexamethasone; 6 mg/day for 10 days, or other options of corticosteroids), identification of candida species, antifungal susceptibility, antifungal treatment and mortality.

The dosage of each type of steroid used for COVID was converted to the equivalent dose of methylprednisolone, and analyses of steroid data were conducted based on the total dose and duration of methylprednisolone. Furthermore, the time intervals (in days) between RT-PCR confirmation of COVID and IMV, between RT-PCR confirmation of COVID and diagnosis of CAC, between hospitalisation and ICU admission, as well as the duration of mechanical ventilation and ICU length of stay, were recorded.

## 2.4 | Main outcome

Death occurring within 30 days after diagnosis of candidemia was defined as crude mortality. Risk factors for mortality in patients with CAC were investigated.

## 2.5 | Ethics statement

The authors confirm that the ethical policies of the journal, as noted on the journal's author guidelines page, have been adhered to and ethical approval for this study was obtained from the Istanbul Medipol University Faculty of Medicine Non-Invasive Clinical Research Ethics Committee (E-10840098-772.02-1631/05.03.2022).

## 2.6 | Statistics

The statistical analyses were carried out using SPSS software version 22.0. The normal distribution of variables was assessed using the Shapiro–Wilk test. Descriptive analyses were presented

as means ± standard deviations for normally distributed variables, and as medians (min–max) for variables that were not normally distributed. Continuous variables were compared using the Mann–Whitney *U*-test due to the violation of parametric test assumptions, while categorical variables were compared using the Chi-square test. To identify independent predictors of mortality in CAC, multivariate logistic regression analysis was performed. All variables that showed significance in the univariate analysis between CAC patients who survived and those who did not survive were included in the multivariate logistic regression models. The performance of the established logistic regression model in predicting mortality was evaluated using ROC Curve analysis, and the sensitivity, specificity, positive predictive value and negative predictive value were reported. A *p*-value of <.05 was considered statistically significant.

## 3 | RESULTS

This study examined 293 patients with CAC from 18 participating countries (Turkey [*n*=88], Qatar [*n*=27], Afghanistan [*n*=26], Florida [*n*=24], Egypt [*n*=24], Bahrain [*n*=24], Bulgaria [*n*=20], Abu Dhabi [*n*=15], Hungary [*n*=13], Romania [*n*=10], India [*n*=7], Portugal [*n*=5], Italia [*n*=4], Russia [*n*=2], Bangladesh [*n*=1], Croatia [*n*=1], Pakistan [*n*=1] and Sarajevo [*n*=1]). Table 1 presents the demographic, clinical and microbiologic data of these patients. The median age of the patients was 67 (ranging from 28 to 109), and 63% of them were male.

### 3.1 | Comorbid conditions

Comorbidities were present in 87% of the patients, with diabetes mellitus 125 (43%) and coronary artery disease 92 (31%) being the most common. Fifty-three patients (18%) had three or more comorbidities, and 85% of them were 65 years or older.

### 3.2 | Predisposing factors

The main predisposing factors for candidemia included the use of broad-spectrum antibiotics 263 (90%), IMV 262 (89%), the presence of a central venous catheter 211 (72%) and total parenteral nutrition 122 (42%).

### 3.3 | Microbial identification

A total of 293 *Candida* spp. were isolated from blood cultures, with 250 being identified as specific *Candida* species. The most prevalent species was *C. albicans* 113 (39%), followed by *C. parapsilosis*, *C. glabrata*, *C. tropicalis* and *C. auris* at 46 (16%), 33 (11%), 25 (9%) and 17 (6%), respectively, among the non-albicans species.

TABLE 1 Demographic characteristics of patients with COVID-associated candidemia.

Demographic characteristics	Total N = 293
Age median (min–max)	67 (28–109)
Gender	
Female	109 (37)
Male	184 (63)
Comorbidity	254 (87)
DM	125 (43)
Obesity, BMI ≥ 35	42 (14)
Malignancy	29 (9)
Coronary artery disease	92 (31)
Chronic renal failure	48 (16)
Chronic obstructive pulmonary disease	37 (13)
Hypertension	45 (15)
Patients who had three or more comorbidities	53 (18)
Predisposing factors for candidemia	
Use of immunosuppression therapy <sup>a</sup>	29 (10)
Use of long-term steroids <sup>b</sup>	25 (8.5)
Use of broad-spectrum antibiotic	263 (90)
Total parenteral nutrition	122 (42)
Central venous catheter	211 (72)
Use of steroid treatment for COVID median (min–max)	
The total steroid dose (mg)	80 (0–8500)
The total steroid during (days)	10 (0–80)
Antiviral treatments	254 (87)
Remdesivir	85 (33)
Favipiravir	117 (46)
Hydroxychloroquine	35 (13)
Lopinavir-ritonavir	13 (5)
No antiviral treatment	39 (13)
Tocilizumab	53 (18)
Lymphocyte count at diagnosis of CAC median (min–max)	810 (12–14,000)
Renal replacement therapy at diagnosis of CAC	81 (28)
Inotropic therapy at diagnosis of CAC	135 (46)
SOFA score median (min–max)	9 (0–19)
Invasive mechanical ventilation	262 (89)
The total duration of IMV median (min–max)	12 (0–150)
The total ICU length of stay median (min–max)	20 (2–152)
No antifungal treatment	21 (7)
Candida species	
<i>C. albicans</i>	113 (39)
<i>C. glabrata</i>	33 (11)
<i>C. parapsilosis</i>	46 (16)
<i>C. tropicalis</i>	25 (9)
<i>C. auris</i>	17 (6)
<i>C. krusei</i>	6 (2)

TABLE 1 (Continued)

Demographic characteristics	Total N = 293
Other <i>Candida</i> subspecies	10 (3)
Not identified <i>Candida</i> spp.	43 (15)
Antifungal resistance <sup>c</sup>	
Azole	22 (15)
Amphotericin B	12 (0.9)
Echinocandin	5 (0.4)
30-day crude mortality	183 (62.4)

Note: Unless stated otherwise, data are presented as numbers (%).

Abbreviations: BMI, Body mass index; CAC, COVID-associated candidemia; DM, Diabetes mellitus; ICU, Intensive care unit; IMV, Invasive mechanical ventilation; RTT, Renal replacement therapy.

<sup>a</sup>Immune suppressive or modulating therapy within 90 days before hospitalisation for COVID.

<sup>b</sup>Long-term steroid use, as defined prednisolone ≥0.3 mg/kg/day ≥3 weeks, in the previous 2 months before the diagnosis of COVID.

<sup>c</sup>Antifungal susceptibility test was performed on 162 of 293 *Candida* isolates.

### 3.4 | Antifungal susceptibility testing

Antifungal susceptibility testing was performed on 162 *Candida* spp., revealing resistance rates of 15% to azoles, 0.9% to amphotericin B and 0.5% to echinocandins.

### 3.5 | Antifungal treatment

Ninety-three per cent of patients received antifungal treatment. The median duration of antifungal therapy in this cohort was 11 days (min–max: 0–55). Of 293 patients, 116 (40%) received an echinocandin, 102 (35%) received an azole as initial therapy and two patients received amphotericin B. In 52 patients (18%), the initial antifungal treatment was switched to another antifungal group. In 36 of these patients (12%), an azole was switched to an echinocandin. Echinocandins were the definitive treatment in 52% of patients. Twenty-one patients (7%) did not receive any antifungal and all of them died. Fifteen of the patients who did not receive antifungal therapy died within the first 72 h. The majority of patients received an echinocandin or azole. Therefore, these two antifungal groups were evaluated in the univariate analysis and no statistically significant results were obtained ( $p$ : .075).

### 3.6 | Outcomes

The crude 30-day mortality rate was 62.4%. Logistic regression analysis identified age, SOFA score, IMV and duration of mechanical ventilation as factors influencing mortality. Table 2 presents the results of both univariate and multivariate analyses of the factors affecting mortality.

TABLE 2 Univariate and multivariate analysis of factors affecting mortality in patients with COVID-associated candidemia.

	Univariate analysis			Multivariate analysis		
	Survival N = 93 (%)	Non-survival N = 200 (%)	p	Odds	95% CI	p
Age median (min–max)	61 (29–87)	68 (28–109)	.0005	<b>1.046</b>	<b>1.020–1.072</b>	<b>.0005</b>
Gender						
Female	26 (28)	83 (41.5)	.026			
Male	67 (72)	117 (58.5)				
Comorbidity	74 (71.6)	179 (89.5)	.021			
DM	37 (39.8)	88 (44)	.497			
Obesity (BMI ≥ 35)	19 (20.4)	23 (11.5)	.042			
Malignancy	4 (4.3)	25 (12.5)	.034			
Coronary artery disease	20 (21.5)	72 (36)	.013			
Chronic renal failure	9 (9.7)	39 (19.5)	.034			
COPD	5 (5.4)	32 (16)	.011			
Use of immunosuppression therapy prior to COVID <sup>a</sup>	5 (5.4)	24 (12)	.077			
Use of long-term steroids prior to COVID <sup>b</sup>	8 (8.6)	17 (8.5)	.977			
Use of broad-spectrum antibiotic	83 (89.2)	180 (90)	.843			
Total parenteral nutrition	27 (29)	95 (47.5)	.003			
Central venous catheter	49 (52.7)	162 (81)	.0005			
The total steroid dose (mg) for COVID	80 (0–8500)	80 (0–6800)	.066			
The total steroid duration (days) for COVID	10 (0–40)	10 (0–80)	.718			
Remdesivir	29 (31.2)	56 (28)	.576			
Tocilizumab	13 (14)	40 (20)	.213			
Echinocandin <sup>c</sup>	57 (53.8)	101 (64.7)	.075			
Lymphocyte count at diagnosis of CAC	900 (12–400)	720 (21–1400)	.003			
RRT at diagnosis of CAC	21 (22.5)	60 (30)	.208			
SOFA score	6 (0–13)	9 (0–19)	.0005	<b>1.307</b>	<b>1.176–1.453</b>	<b>.0005</b>
Invasive mechanical ventilation	68 (73.1)	193 (96.5)	.0005	<b>7.959</b>	<b>1.444–43.863</b>	<b>.017</b>
The total duration of IMV	9.5 (0–150)	13 (0–74)	.020	<b>0.981</b>	<b>0.965–0.997</b>	<b>.020</b>
The total ICU length of stay	21.5 (5–152)	20 (2–104)	.117			

Abbreviations: BMI, Body mass index; CAC, COVID-associated candidemia; COPD, Chronic obstructive pulmonary disease; DM, Diabetes mellitus; ICU, Intensive care unit; IMV, Invasive mechanic ventilation; RTT, Renal replacement therapy. Bold values were detected to be statistically significant.

<sup>a</sup>Long-term steroid use, as defined prednisolone ≥0.3 mg/kg/day ≥3 weeks, in the previous 2 months prior to diagnosis of COVID.

<sup>b</sup>Immune suppressive or modulating therapy within 90 days prior to hospitalisation for COVID.

<sup>c</sup>The majority of patients used the echinocandin and azole groups. Univariate analysis was performed for these.

### 3.7 | The statistical model

Figure 1 displays the area under the ROC curve. The sensitivity, specificity, positive predictive value and negative predictive value of the mortality predictive model are shown in Table 3.

## 4 | DISCUSSION

This study involved the analysis of 293 patients with CAC. The median age of the patients pointed an elderly patient population. The

most prevalent comorbidities observed were diabetes mellitus and coronary artery disease. In our analysis, a comparison between the data of patients who survived and those who did not survive with CAC revealed that advanced age, SOFA score, invasive mechanical ventilation and the total duration of invasive mechanical ventilation were significant factors. In previous studies, various factors including age, comorbidities and high Charlson comorbidity index scores have been linked to adverse clinical outcomes, and increased mortality in patients with COVID, candidemia and CAC.<sup>12,14–16</sup>

In our study, patients aged 65 years and older accounted for 85% of patients with three or more comorbidities. Age was identified as

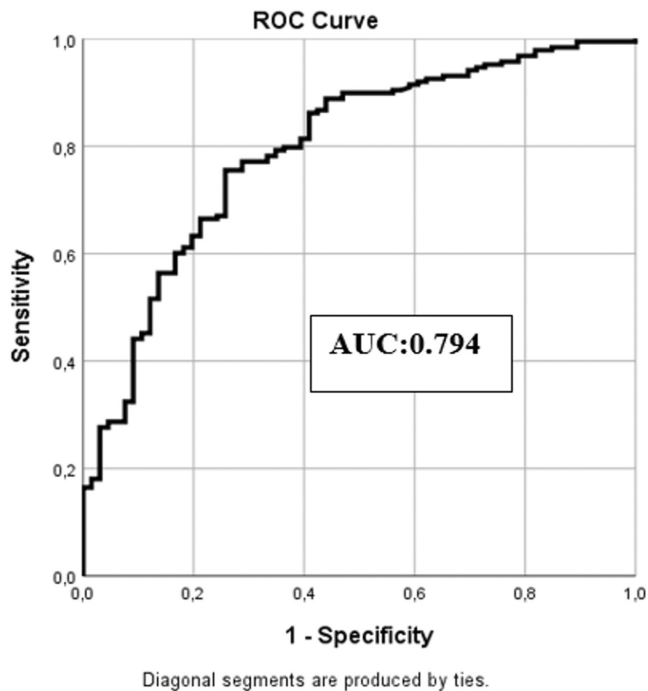


FIGURE 1 Receiver operating characteristic curves of the model to predict mortality.

TABLE 3 The sensitivity, specificity, positive predictive value and negative predictive value of the mortality predictive model.

	Sensitivity	Specificity	PPV	NPV
Mortality model	92.9%	36%	81%	63.8%

Abbreviations: NPV, negative predictive value; PPV, Positive predictive value.

a statistically significant risk factor associated with mortality. There could be several reasons for this. This could be attributed to the diminished B-cell and T-cell function in elderly patients, leading to prolonged inflammatory responses and viral replication persistence.<sup>17</sup> Additionally, the increasing number of comorbidities with age may contribute to poor clinical outcomes.<sup>18,19</sup> Also, diseases that come with old age such as dementia, cardiovascular disease, hypertension and chronic kidney disease have been found to be associated with mortality in the elderly population.<sup>20</sup> Furthermore, the death rate from COVID in individuals aged 65 and over increased exponentially with age.<sup>21,22</sup>

However, the relationship between age and mortality in candidemia is not straightforward. Several studies have reported higher mortality rates in older patients.<sup>8,23,24</sup> In some studies, no significant association was found between age and mortality; these studies were conducted especially in older and elderly patients and the mortality rate was lower than our results.<sup>25–27</sup> There are few studies on mortality in patients with CAC<sup>12,28</sup>; therefore, this topic is not clear in CAC cases. To sum up, the relationship between age and mortality would have been affected by old age-related diseases (e.g. cardiovascular and cerebrovascular) and health care services

of the countries. All things considered, age could be a confounding factor.

The SOFA and quick SOFA scores have been recommended by the Third International Consensus Definitions for Sepsis and Septic Shock for screening sepsis and evaluating prognosis.<sup>29</sup> The mean and highest SOFA scores have proven to be the most predictive of mortality in ICU patients.<sup>30</sup> In our study, the median SOFA score was significantly higher in non-survivors. In the context of COVID, an initial Chinese study demonstrated that higher SOFA scores were associated with a higher risk of mortality COVID.<sup>31</sup> Kayaaslan et al. found that the presence of sepsis was associated with mortality, and age and previous steroid use were independent risk factors in COVID, although detailed data on steroid dose and duration were not provided in the article.<sup>12</sup> In our study, the use of long-term steroids before COVID and the total dose and duration of steroids for COVID were not statistically significant factors.

In this study, we found an association between invasive mechanical ventilation and the duration of invasive mechanical ventilation with mortality. However, previous studies have yielded varied results regarding the impact of length of stay in hospital and ICU, and duration of mechanical ventilation on mortality in candidemia patients with COVID. Kayaaslan et al. compared patients with COVID with and without candidemia and found no significant difference between the groups in terms of mechanical ventilation and duration of intubation. However, the duration of ICU stay was longer in patients with non-COVID candidemia, and this difference was statistically significant. Notably, these factors were not found to be associated with mortality.<sup>12</sup> Boachie et al. reported that candidemia patients with COVID had a higher incidence of in-hospital mortality and longer median ICU length of stay, hospital length of stay and duration of mechanical ventilation.<sup>32</sup> The discrepant findings regarding these factors' impact on mortality may also stem from variations in the quality of healthcare and adherence to infection control measures.

Severe COVID cases during the pandemic necessitated hospitalisation in the ICU and mechanical ventilation support, resulting in increased mortality and morbidity.<sup>14</sup> Consequently, an upsurge in secondary infections, including candidemia, has been reported in hospitalised patients with COVID,<sup>33,34</sup> prompting studies on mortality in patients with CAC.<sup>12</sup> Despite an extensive search on PubMed, we could not find an article encompassing such a large number of cases as in our study, examining the factors influencing mortality in patients with CAC. Previous studies primarily focused on investigating the incidence and risk factors of candidemia in patients with COVID,<sup>6,33–35</sup> while only a few examined mortality in patients with CAC.<sup>12,32</sup> In our international study, the crude 30-day mortality rate in patients with CAC was 62.4%. The mortality rate in patients without CAC has been reported to range from 23% to 54% in the ICU or other hospital wards.<sup>9,36–39</sup> In hospitalised patients with COVID, the mortality rate was almost two times higher in mechanically ventilated patients than in non-mechanically ventilated.<sup>21,40</sup> Studies conducted during the COVID pandemic have indicated a higher risk of mortality in patients with CAC compared to those without.<sup>11,33,41</sup> The reported 30-day crude or all-cause in-hospital mortality rates

ranged from 60% to 90%.<sup>11,12,32</sup> Seagle et al. found that all-cause in-hospital fatality was two times higher among those with COVID compared to those without.<sup>28</sup> However, Mastrangelo et al. reported no statistically significant difference in mortality between COVID and non-COVID candidemia patients.<sup>6</sup> According to data from reported studies, mortality rates in patients with CAC appear to be quite high.

Ninety-three per cent of patients received antifungal treatment. The median duration of antifungal treatment was 11 days (min–max: 0–55). Fifty-two per cent of patients received an echinocandin as definitive treatment. The guideline recommends the use of echinocandins in critical patients in first-line therapy.<sup>42</sup> Clinical and microbiological response rates in efficacy studies with echinocandins are 60%–70%.<sup>43,44</sup> Some studies found that survival and clinic response rates were lower in ICU patients than in non-ICU patients.<sup>44–46</sup> The authors emphasised that this was a reflection of the underlying poor condition of ICU patients (e.g. high APACHE II score) independent of antifungal therapy. Similarly, Suh et al. reported that the low clinical response rate may be related to the advanced age of patients and the high proportion of patients with septic shock.<sup>27</sup> Crude mortality of the patients receiving echinocandins was 64.7% in our study. The high mortality rate may be related to the fact that the study group was ICU population with CAC. The initial antifungal treatment trend of the centres participating in this study is in line with the guideline recommendation.

Our study has several limitations. First, this is a retrospective study; this may result in incomplete or incorrect data entry. Second, there is no control group to determine the additive of COVID or candidemia on mortality. This made it difficult for us to differentiate factors influencing COVID mortality from those influencing CAC mortality. Furthermore, the potential impact of additional bacterial or fungal coinfections on mortality might not have been adequately identified. Finally, the mortality attributed to candidemia is undetermined.

In conclusion, we acknowledge that COVID and candidemia are distinct clinical conditions associated with high mortality rates. However, mortality appears to be further exacerbated in patients with CAC. Our study revealed a remarkably elevated crude mortality rate within 30 days, and this rate escalates with factors such as age, high SOFA score, mechanical ventilation and prolonged duration of mechanical ventilation. These findings hold immense importance as they provide valuable insights for identifying and acknowledging adverse outcomes among patients in the ICU with CAC. By shedding light on these outcomes, the study contributes significantly to enhancing the ability to recognise and understand the potential challenges faced by this specific patient population. Such knowledge can aid in implementing targeted interventions and developing effective strategies to improve patient care and outcomes in the ICU.

## AFFILIATIONS

<sup>1</sup>Department of Infectious Diseases and Clinical Microbiology, Istanbul Medipol University Medical Faculty, Istanbul, Turkey

<sup>2</sup>Department of Internal Medicine, Istanbul Medipol University Medical

Faculty, Istanbul, Turkey

<sup>3</sup>Department of Infectious Disease, Hamad Medical Corporation and Communicable Disease Center, Hamad Medical Corporation, Doha, Qatar

<sup>4</sup>Department of Pediatrics, Kandahar University Faculty of Medicine, Kandahar, Afghanistan

<sup>5</sup>Division of Infectious Diseases, Department of Medicine, University of Miami, Miami, Florida, USA

<sup>6</sup>Department of Clinical Pathology, Faculty of Medicine, Cairo University, Giza, Egypt

<sup>7</sup>Department of Anesthesiology and Intensive Care, University Hospital Queen Giovanna – ISUL, Medical University of Sofia, Sofia, Bulgaria

<sup>8</sup>Department of Infectious Disease and Clinical Microbiology, Marmara University Pendik Training and Research Hospital, Istanbul, Turkey

<sup>9</sup>Department of Internal Medicine, Salmaniya Medical Center, Manama, Bahrain

<sup>10</sup>Department of Infectious Diseases and Clinical Microbiology, Ataturk University Faculty of Medicine, Erzurum, Turkey

<sup>11</sup>Salmaniya Medical Center, Manama, Bahrain

<sup>12</sup>South Pest Central Hospital, National Institute of Hematology and Infectious Diseases, Budapest, Hungary

<sup>13</sup>Semmelweis University, Budapest, Hungary

<sup>14</sup>Tropical and Infectious Disease Division, Sheikh Shakhboub Medical City, Abu Dhabi, The United Arab Emirates

<sup>15</sup>Department of Clinical Microbiologia, Breach Candy Hospital Trust, Mumbai, India

<sup>16</sup>Department of Infectious Diseases and Clinical Microbiology, Medical Faculty, Bezmialem Vakif University, Istanbul, Turkey

<sup>17</sup>Department of Infectious Diseases and Clinical Microbiology, Onsekiz Mart University School of Medicine, Canakkale, Turkey

<sup>18</sup>Department of Infectious Diseases & Clinical Microbiology, Ege School of Medicine, Izmir, Turkey

<sup>19</sup>Department of Infectious Diseases and Clinical Microbiology, University of Health Sciences, Elazig Fethi Sekin City Hospital, Elazig, Turkey

<sup>20</sup>Infectious Diseases Department, Centro Hospitalar Universitário de São João, Porto, Portugal

<sup>21</sup>National Institute for Infectious Diseases “Prof. Dr. Matei Bals”, Bucharest, Romania

<sup>22</sup>Department of Infectious Diseases, Diskapı Yıldırım Beyazıt Training and Research Hospital, University of Health Science Turkey, Istanbul, Turkey

<sup>23</sup>Department of Infectious Diseases, Van Training and Research Hospital, University of Health Science Turkey, Van, Turkey

<sup>24</sup>Department of Infectious Diseases and Clinical Microbiology, Istanbul Medeniyet University Faculty of Medicine, Istanbul, Turkey

<sup>25</sup>Department of Infectious Diseases and Clinical Microbiology, Erciyes University Faculty of Medicine, Kayseri, Turkey

<sup>26</sup>Department of Medical Parasitology, Research Institute of Ophthalmology, Giza, Egypt

<sup>27</sup>Unit of Infectious Diseases, Department of Clinical and Experimental Medicine, ARNAS Garibaldi Hospital, University of Catania, Catania, Italy

<sup>28</sup>Department of Health Promotion Sciences, Maternal and Infant Care, Internal Medicine and Medical Specialties (PROMISE) – Infectious Disease Unit, Policlinico “P. Giaccone”, University of Palermo, Palermo, Italy

<sup>29</sup>Clinical Infectious Diseases Hospital Constanta, Ovidius University of Constanta, Constanta, Romania

<sup>30</sup>Central Research Institute of Epidemiology, Moscow, Russia

<sup>31</sup>Department of Public Health and Informatics, Jahangirnagar University, Savar, Dhaka, Bangladesh

<sup>32</sup>University of Zagreb School of Medicine, University Hospital Centre Zagreb, Zagreb, Croatia

<sup>33</sup>Shifa International Hospital, Islamabad, Pakistan

<sup>34</sup>Unit for Infectious Disease, Clinical Center of the University of Sarajevo, Sarajevo, Bosnia and Herzegovina

<sup>35</sup>National Institute for Infectious Diseases “Prof. Dr. Matei Bals”, Bucharest, Romania

<sup>36</sup>Department of Haematology, Ataturk University Faculty of Medicine, Erzurum, Turkey

<sup>37</sup>Department of Infectious Diseases and Clinical Microbiology, Istanbul Kosuyolu High Specialization Training and Research Hospital, Istanbul, Turkey

<sup>38</sup>Istanbul Medipol University School of Medicine, Istanbul, Turkey  
<sup>39</sup>Department of Infectious Diseases, Bahrain Oncology Centre, King Hamad University Hospital, Al Sayh, Bahrain  
<sup>40</sup>Department of Infectious Diseases & Clinical Microbiology, Gulhane School of Medicine, Turkish Health Sciences University, Ankara, Turkey

### CONFLICT OF INTEREST STATEMENT

The authors have no conflicts of interest to declare.

### DATA AVAILABILITY STATEMENT

The data supporting the findings of this study are available from the corresponding author upon request.

### ORCID

Selda Aydın  <https://orcid.org/0000-0002-3131-442X>

Buket Erturk Sengel  <https://orcid.org/0000-0003-2182-4693>

### REFERENCES

- Silva DL, Lima CM, Magalhães VCR, et al. Fungal and bacterial coinfections increase mortality of severely ill COVID-19 patients. *J Hosp Infect.* 2021;113:145-154. doi:10.1016/j.jhin.2021.04.001
- Bardi T, Pintado V, Gomez-Rojo M, et al. Nosocomial infections associated to COVID-19 in the intensive care unit: clinical characteristics and outcome. *Eur J Clin Microbiol Infect Dis.* 2021;40:495-502. doi:10.1007/s10096-020-04142-w/Published
- Gerver SM, Guy R, Wilson K, et al. National surveillance of bacterial and fungal coinfection and secondary infection in COVID-19 patients in England: lessons from the first wave. *Clin Microbiol Infect.* 2021;27:1658-1665. doi:10.1016/j.cmi.2021.05.040
- Pemán J, Ruiz-Gaitán A, García-Vidal C, et al. Fungal co-infection in COVID-19 patients: should we be concerned? *Rev Iberoam Micol.* 2020;37:41-46. doi:10.1016/j.riam.2020.07.001
- Cruz AB, LeRose J, Evans KJ, Meyer M, Chopra T, Chopra T. 291. Epidemiology of candidemia rates during COVID-19 and comparison of outcomes in candidemia between COVID-19 and non-COVID-19 patients. *Open Forum Infect Dis.* 2021;8:S253-S254. doi:10.1093/ofid/ofab466.493
- Mastrangelo A, Germinario BN, Ferrante M, et al. Candidemia in coronavirus disease 2019 (COVID-19) patients: incidence and characteristics in a prospective cohort compared with historical non-COVID-19 controls. *Clin Infect Dis.* 2021;73:E2838-E2839. doi:10.1093/CID/CIAA1594
- Bassetti M, Merelli M, Righi E, et al. Epidemiology, species distribution, antifungal susceptibility, and outcome of candidemia across five sites in Italy and Spain. *J Clin Microbiol.* 2013;51:4167-4172. doi:10.1128/JCM.01998-13
- Meyahnwi D, Siraw BB, Reingold A. Epidemiologic features, clinical characteristics, and predictors of mortality in patients with candidemia in Alameda County, California; a 2017–2020 retrospective analysis. *BMC Infect Dis.* 2022;22:843. doi:10.1186/s12879-022-07848-8
- Aydın S, Derin O, Sahin M, et al. Epidemiology of nosocomial candidemia, mortality, and antifungal resistance: 7-year experience in Turkey. *Jpn J Infect Dis.* 2022;75:597-603. doi:10.7883/yoken.JIID.2022.181
- Papadimitriou-Oliveris M, Kolonitsiou F, Kefala S, et al. Increased incidence of candidemia in critically ill patients during the Coronavirus Disease 2019 (COVID-19) pandemic. *Braz J Infect Dis.* 2022;26:102353. doi:10.1016/j.bjid.2022.102353
- Dixit D, Jen P, Maxwell TD, et al. Risk factors and clinical outcomes of candidemia associated with severe COVID-19. *Crit Care Explor.* 2022;4:e0762. doi:10.1097/CCE.0000000000000762
- Kayaaslan B, Eser F, Kaya Kalem A, et al. Characteristics of candidemia in COVID-19 patients; increased incidence, earlier occurrence and higher mortality rates compared to non-COVID-19 patients. *Mycoses.* 2021;64:1083-1091. doi:10.1111/myc.13332
- Clinical management of COVID-19: interim guidance, 27 May 2020. <https://apps.who.int/iris/handle/10665/332196>. Accessed April 17, 2023.
- Dessie ZG, Zewotir T. Mortality-related risk factors of COVID-19: a systematic review and meta-analysis of 42 studies and 423,117 patients. *BMC Infect Dis.* 2021;21:855. doi:10.1186/s12879-021-06536-3
- Barchiesi F, Orsetti E, Mazzanti S, et al. Candidemia in the elderly: what does it change? *PLoS One.* 2017;12:e017657. doi:10.1371/journal.pone.0176576
- Becerra-Muñoz VM, Núñez-Gil IJ, Eid CM, et al. Clinical profile and predictors of in-hospital mortality among older patients hospitalised for COVID-19. *Age Ageing.* 2021;50:326-334. doi:10.1093/ageing/afaa258
- Opal SM, Girard TD, Ely EW. The immunopathogenesis of sepsis in elderly patients. *Clin Infect Dis.* 2005;41:S504-S512. doi:10.1086/432007
- Nojiri S, Itoh H, Kasai T, et al. Comorbidity status in hospitalized elderly in Japan: analysis from national database of health insurance claims and specific health checkups. *Sci Rep.* 2019;9:20237. doi:10.1038/s41598-019-56534-4
- Yıldız A, Yiğit A, Benli AR. The prognostic role of Charlson comorbidity index for critically ill elderly patients. *Eur Res J.* 2019;6:67-72. doi:10.18621/eurj.451391
- Alves VP, Casemiro FG, De Araujo BG, et al. Factors associated with mortality among elderly people in the covid-19 pandemic (Sars-cov-2): a systematic review and meta-analysis. *Int J Environ Res Public Health.* 2021;18:8008. doi:10.3390/ijerph18158008
- Kim L, Garg S, O'Halloran A, et al. Risk factors for intensive care unit admission and in-hospital mortality among hospitalized adults identified through the US coronavirus disease 2019 (COVID-19)-associated hospitalization surveillance network (COVID-NET). *Clin Infect Dis.* 2021;72:e206-e214. doi:10.1093/cid/ciaa1012
- Tejada-Vera B, Kramarow EA. COVID-19 mortality in adults aged 65 and over: United States, 2020. *NCHS Data Brief.* 2022;446:1-8.
- Lortholary O, Renaudat C, Sitbon K, et al. Worrying trends in incidence and mortality of candidemia in intensive care units (Paris area, 2002–2010). *Intensive Care Med.* 2014;40:1303-1312. doi:10.1007/s00134-014-3408-3
- Keighley C, Chen SCA, Marriott D, et al. Candidaemia and a risk predictive model for overall mortality: a prospective multicentre study. *BMC Infect Dis.* 2019;19:445. doi:10.1186/s12879-019-4065-5
- Xiao Z, Wang Q, Zhu F, An Y. Epidemiology, species distribution, antifungal susceptibility and mortality risk factors of candidemia among critically ill patients: a retrospective study from 2011 to 2017 in a teaching hospital in China. *Antimicrob Resist Infect Control.* 2019;8:89. doi:10.1186/s13756-019-0534-2
- Zatta M, Di Bella S, Giacobbe DR, et al. Clinical features and mortality of nosocomial candidemia in very old patients: a multicentre Italian study. *Gerontology.* 2020;66:532-541. doi:10.1159/000510638
- Suh JW, Kim SB, Yoon YK, Sohn JW, Kim MJ, Kim JH. Anidulafungin versus micafungin in the treatment of candidemia in adult patients. *Mycopathologia.* 2020;185:653-664. doi:10.1007/s11046-020-00471-8
- Seagle EE, Jackson BR, Lockhart SR, et al. The landscape of candidemia during the coronavirus disease 2019 (COVID-19) pandemic. *Clin Infect Dis.* 2022;74:802-811. doi:10.1093/cid/ciab562
- Singer M, Deutschman CS, Seymour C, et al. The third international consensus definitions for sepsis and septic shock (sepsis-3). *JAMA.* 2016;315:801-810. doi:10.1001/jama.2016.0287
- Lopes Ferreira F, Peres Bota D, Bross A, Mélot C, Vincent JL. Serial evaluation of the SOFA score to predict outcome in



- critically ill patients. *JAMA*. 2001;286:1754-1758. doi:[10.1001/jama.286.14.1754](https://doi.org/10.1001/jama.286.14.1754)
31. Zhou F, Yu T, Du R, et al. Clinical course and risk factors for mortality of adult inpatients with COVID-19 in Wuhan, China: a retrospective cohort study. *Lancet*. 2020;395:1054-1062. doi:[10.1016/S0140-6736\(20\)30566-3](https://doi.org/10.1016/S0140-6736(20)30566-3)
  32. Boachie NA, Johnston JP, Philip SA, Sullivan KV, Heaney M. Characteristics and incidence of candidemia in hospitalized coronavirus 2019 (COVID-19) patients. *Am J Infect Dis*. 2022;18:1-8. doi:[10.3844/ajidsp.2022.1.8](https://doi.org/10.3844/ajidsp.2022.1.8)
  33. Nucci M, Barreiros G, Guimarães LF, Deriquehem VAS, Castiñeiras AC, Noué SA. Increased incidence of candidemia in a tertiary care hospital with the COVID-19 pandemic. *Mycoses*. 2021;64:152-156. doi:[10.1111/myc.13225](https://doi.org/10.1111/myc.13225)
  34. Machado M, Estévez A, Sánchez-Carrillo C, et al. Incidence of candidemia is higher in COVID-19 versus non-COVID-19 patients, but not driven by Intrahospital transmission. *J Fungi*. 2022;8:305. doi:[10.3390/jof8030305](https://doi.org/10.3390/jof8030305)
  35. Bishburg E, Okoh A, Nagarakanti SR, Lindner M, Migliore C, Patel P. Fungemia in COVID-19 ICU patients, a single medical center experience. *J Med Virol*. 2021;93:2810-2814. doi:[10.1002/jmv.26633](https://doi.org/10.1002/jmv.26633)
  36. Battistolo J, Glampedakis E, Damonti L, et al. Increasing morbidity and mortality of candidemia over one decade in a Swiss university hospital. *Mycoses*. 2021;64:1512-1520. doi:[10.1111/myc.13376](https://doi.org/10.1111/myc.13376)
  37. Mazzanti S, Brescini L, Morroni G, et al. Candidemia in intensive care units over nine years at a large Italian university hospital: comparison with other wards. *PLoS One*. 2021;16:e0252165. doi:[10.1371/journal.pone.0252165](https://doi.org/10.1371/journal.pone.0252165)
  38. Brescini L, Mazzanti S, Morroni G, et al. Candidemia in internal medicine: facing the new challenge. *Mycopathologia*. 2022;187:181-188. doi:[10.1007/s11046-022-00624-x](https://doi.org/10.1007/s11046-022-00624-x)
  39. Ohki S, Shime N, Kosaka T, Fujita N. Impact of host- and early treatment-related factors on mortality in ICU patients with candidemia: a bicentric retrospective observational study. *J Intensive Care*. 2020;8:30. doi:[10.1186/s40560-020-00450-7](https://doi.org/10.1186/s40560-020-00450-7)
  40. Alharthy A, Aletreby W, Faqihi F, et al. Clinical characteristics and predictors of 28-day mortality in 352 critically ill patients with COVID-19: a retrospective study. *J Epidemiol Glob Health*. 2021;11:98-104. doi:[10.2991/JEGH.K.200928.001](https://doi.org/10.2991/JEGH.K.200928.001)
  41. Dursun ZB, Sipahioğlu H, Yüksel RC, Sav H, Çelik I. Risk factors and lethality associated with candidemia in severe COVID-19 patients. *Curr Med Mycol*. 2022;8:32-38. doi:[10.18502/cmm.8.1.9212](https://doi.org/10.18502/cmm.8.1.9212)
  42. Pappas PG, Kauffman CA, Andes DR, et al. Clinical practice guideline for the management of candidiasis: 2016 update by the Infectious Diseases Society of America. *Clin Infect Dis*. 2015;62:e1-e50. doi:[10.1093/cid/civ933](https://doi.org/10.1093/cid/civ933)
  43. Dimopoulos G, Paiva JA, Meersseman W, et al. Efficacy and safety of anidulafungin in elderly, critically ill patients with invasive Candida infections: a post hoc analysis. *Int J Antimicrob Agents*. 2012;40:521-526. doi:[10.1016/j.ijantimicag.2012.07.018](https://doi.org/10.1016/j.ijantimicag.2012.07.018)
  44. Ruhnke M, Paiva JA, Meersseman W, et al. Anidulafungin for the treatment of candidaemia/invasive candidiasis in selected critically ill patients. *Clin Microbiol Infect*. 2012;18:680-687. doi:[10.1111/j.1469-0691.2012.03784.x](https://doi.org/10.1111/j.1469-0691.2012.03784.x)
  45. Kett DH, Shorr AF, Reboli AC, Reisman AL, Biswas P, Schlamm HT. Anidulafungin compared with fluconazole in severely ill patients with candidemia and other forms of invasive candidiasis: support for the 2009 IDSA treatment guidelines for candidiasis. *Crit Care*. 2011;15:R253. doi:[10.1186/cc10514](https://doi.org/10.1186/cc10514)
  46. DiNubile MJ, Lupinacci RJ, Strohmaier KM, Sable CA, Kartsonis NA. Invasive candidiasis treated in the intensive care unit: observations from a randomized clinical trial. *J Crit Care*. 2007;22:237-244. doi:[10.1016/j.jcrc.2006.11.004](https://doi.org/10.1016/j.jcrc.2006.11.004)

**How to cite this article:** Aydın S, Mert A, Yılmaz M, et al. Understanding clinical outcomes and factors influencing mortality in intensive care unit patients with COVID-19-associated candidemia. *Mycoses*. 2024;67:e13687. doi:[10.1111/myc.13687](https://doi.org/10.1111/myc.13687)